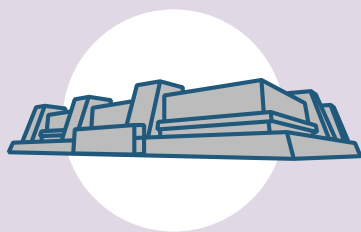
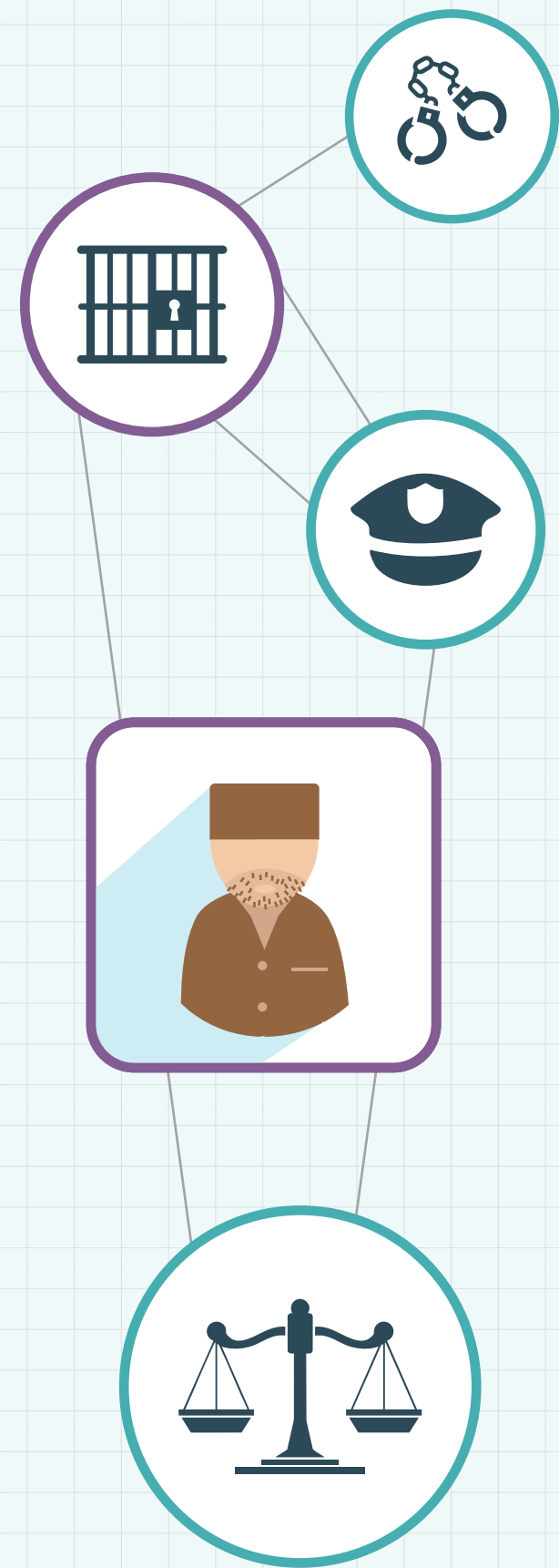


# NATIONAL SURVEY OF IMPRISONED POPULATION (ENPOL)



**INEGI**  
Among other topics, produces the National Surveys of Government (ENG)

ENG PROVIDE INFORMATION ON:



Government



Public Safety



Law Enforcement

to know more+

INEGI

## OBJECTIVE AND STATISTICAL DESIGN OF THE ENPOL



### WHAT IS A SURVEY?

It is a method used to collect data of interest from a representative **sample** of the population from which we seek to obtain information.<sup>1</sup>



To provide information on the experience of the criminal proceeding and imprisonment of the population deprived of liberty aged 18 years and over in penitentiary centers.

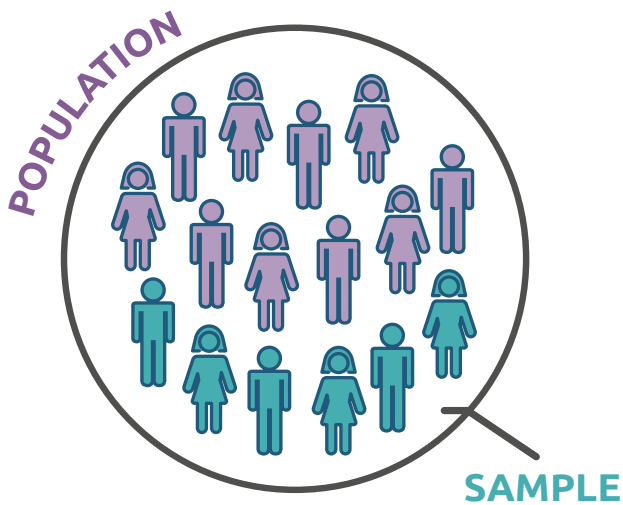
### POPULATION

Total number of people from whom information is sought

VS

### SAMPLE

Part of the total number of people from whom information is sought



**SAMPLE = A PART OF THE IMPRISONED POPULATION IN EACH PENITENTIARY CENTER OF MEXICO**

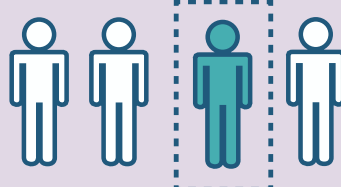


### SELECTED INFORMANT



- To be 18 years and over

**PROCESSED OR SENTENCED POPULATION FOR CRIMES OF THE COMMON OR FEDERAL LAW<sup>3</sup>**



**BEGINNING:**  
2016

**TYPE:**  
Special program (not regular)

**PERIODICITY:**  
Not determined

**SAMPLE:**  
67 584 people deprived of liberty aged 18 years old and over<sup>2</sup>

**COVERAGE:**  
At the national level, by state and penitentiary centers of interest

**REFERENCE PERIOD:**  
Moment of the interview  
Last twelve months

## ENPOL PROCEDURE

### WHO REQUESTS THE INFORMATION?



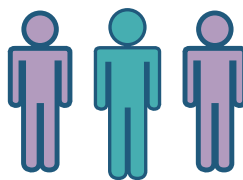
Interviewers from the INEGI visit the penitentiary centers.

### HOW DO THEY REQUEST IT?



Through the application of a general questionnaire with questions organized by topics.

### FROM WHOM IS IT REQUESTED?



First the selected person deprived of liberty is located.



Is requested to have an interview to record their data and experiences.

## INFORMATION THAT THE ENPOL PROVIDES:

On the life conditions, of the infrastructure and access to goods and services in the center

Relationships with other people in terms of violence in the center

Possible acts of corruption during detention, the criminal proceeding and in the access to goods and services

Legal records and release expectations

Characteristics of the detention and of the criminal proceeding

Sociodemographic and socioeconomic data

Notes:  
<sup>1</sup> Refers to sample surveys.  
INEGI, Technical Standard for the Generation of Basic Statistics, Mexico, 2010.

<sup>2</sup> The size corresponds to the 2021 edition: 55 535 men and 12 049 women.

<sup>3</sup> Common-law crimes correspond to conduct classified in the Penal Codes of each state of Mexico; federal-law crimes are classified in federal Laws or regulations.  
See more details at:  
[https://en.inegi.org.mx/app/glosario/default.html?p=ENPOL\\_2021](https://en.inegi.org.mx/app/glosario/default.html?p=ENPOL_2021)

Know all the information  
Scan!

