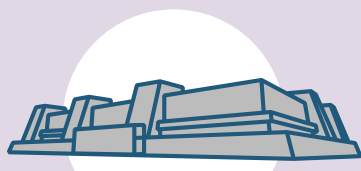


MODULE ON CYBERBULLYING (MOCIBA)



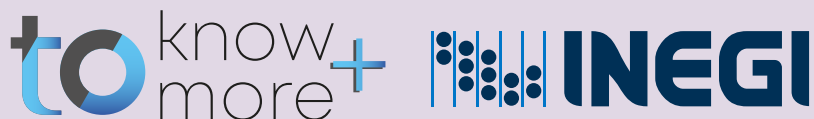
INEGI
Among other topics, produces the National Surveys of Government (ENG)

ENG PROVIDE INFORMATION ON:

Government

Public Safety

Law Enforcement



WHAT IS A SURVEY?

It is a method used to collect data of interest from a representative **sample** of the population from which we seek to obtain information.¹



WHAT IS A MODULE?

It is a source of information that is added in some surveys to obtain data on a particular topic.

In the case of the MOCIBA, it is added to the **ENDUTIH**.²

POPULATION

Total number of people from whom information is sought

VS

SAMPLE

Part of the total number of people from whom information is sought



OBJECTIVE AND STATISTICAL DESIGN OF THE MOCIBA



To provide information on the number of people that have lived some type of cyberbullying and its characteristics.



SAMPLE = A PART OF THE TOTAL OF THE HOUSING UNITS IN MEXICO



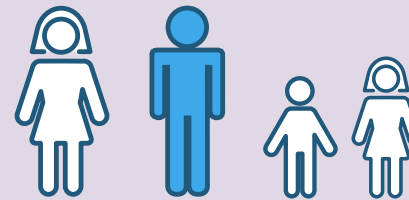
LOCATION OF THE HOUSING UNITS: RURAL AND URBAN AREAS

INFORMANT



CHOSEN PERSON

HOUSEHOLD



- To live in the selected household
- To be 12 years or over
- To have used internet in any device in the last three months

BEGINNING:
2015

TYPE:
permanent project

PERIODICITY:
annual

SAMPLE:
65 172 housing units³

COVERAGE:
at the national level and by state

REFERENCE PERIOD:
the questions of the questionnaire refer to the last 12 months



WHAT IS CYBERBULLYING?

It is the harassment or intimidation through digital technologies. It is a repeated behavior and that seeks to frighten, anger or humiliate other people.⁴

MOCIBA PROCEDURE

WHO REQUESTS THE INFORMATION?



Interviewers from the INEGI.

AT WHAT TIME DO THEY REQUEST IT?



When finishing the ENDUTIH, they identify if the informant will answer the MOCIBA's questionnaire.

FROM WHOM IS IT REQUESTED?

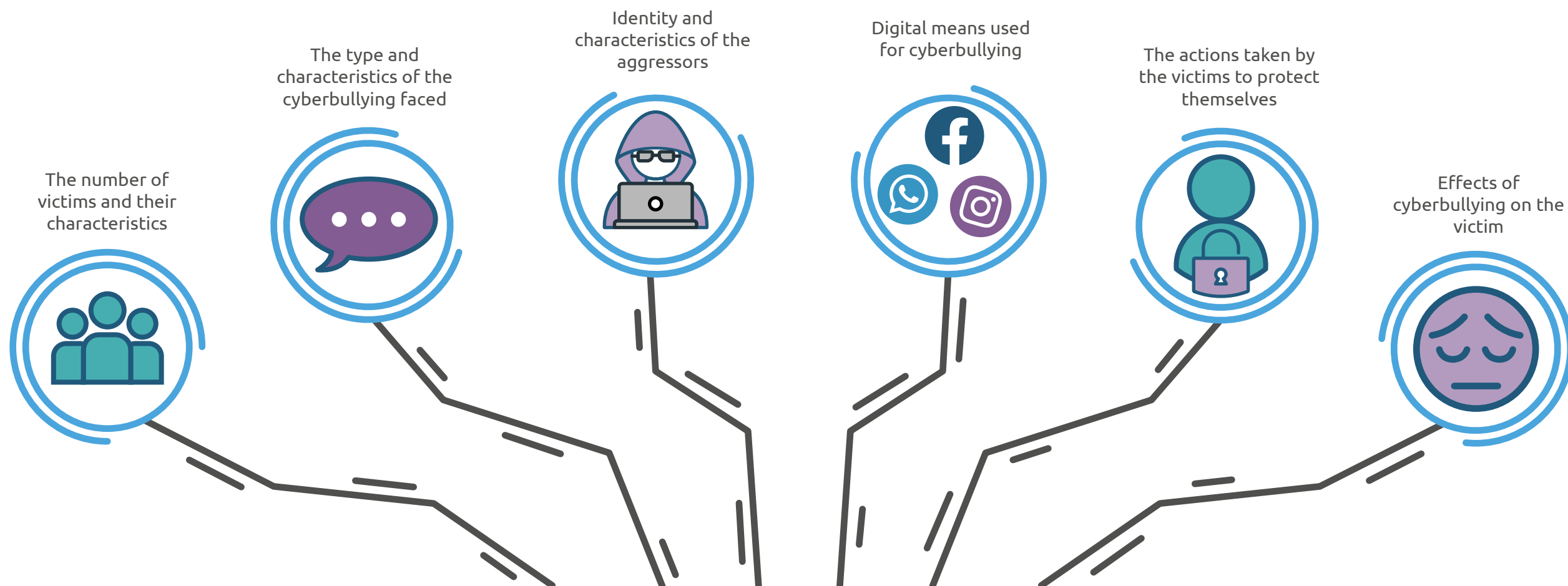


To the chosen person, who will answer if they lived cyberbullying in the last year.



The information seeks to characterize the reported cyberbullying situations.

THE MOCIBA PROVIDES INFORMATION ON CYBERBULLYING REGARDING:



Notes:
¹ Refers to sample surveys.
INEGI, Technical Standard for the Generation of Basic Statistics, Mexico, 2010.

² The National Survey on Availability and Use of Information Technologies in Households (ENDUTIH) can be consulted at: <https://www.inegi.org.mx/programas/endutih/2023/>

³ It corresponds to the 2023 edition. The size of the national sample may change in subsequent editions.

⁴ Consult details of this and other MOCIBA definitions at: <https://en.www.inegi.org.mx/app/glosario/default.html?p=mociba2023>

Find out all the information
Scan!

